

TENNESSEE

WINTER 2007

SURVEYOR



THE OFFICIAL PUBLICATION OF THE TENNESSEE ASSOCIATION OF PROFESSIONAL SURVEYORS

**TAPS 39TH ANNUAL
CONFERENCE & TECHNOLOGY
EXHIBITION**

March 15-17, 2007

**Marriott Hotel
Franklin, Tennessee**

WINTER 2007

**Tennessee Association
 of Professional Surveyors**
 607 W. Due West Avenue, Suite 96
 Madison, TN 37115

615-860-9311

Fax: 615-860-7177

E-mail tapsinc@bellsouth.net

www.taps-inc.com

THE TENNESSEE SURVEYOR is published four times a year: January, April, July and October, by the Tennessee Association of Professional Surveyors (TAPS). Opinions expressed by individual authors are not necessarily endorsed by the officers or Board of TAPS or the editors of this publication. Articles may be reprinted with due credit given to the author unless otherwise indicated at the beginning or end of the article.

**ADDRESS CHANGES AND
 GENERAL BUSINESS**

All notification for editorial matters, changes of address, membership inquiries and general TAPS business correspondence should be directed to Lori Medley, Executive Secretary, at the above address.

CONTRIBUTIONS OF MATERIAL

The Tennessee Surveyor welcomes contributions of articles and comments for publication. The editors would appreciate submittals to be typewritten, double spaced, and preferably only seven paragraphs long (each paragraph should have a maximum of five or six sentences). The editors of The Tennessee Surveyor reserve the right to edit (after author notification) each article.

DEADLINES

Advertising and article copy deadlines are December 15, March 15, June 15 and September 15.

ADVERTISING POLICY

Ads should be camera-ready, black and white POSITIVE PRINT required—ad enclosed in a boxed line with line included in dimensions.

1/4 page - 5" x 3 1/2" - \$80 per issue

1/2 page - 5" x 7 1/2" - \$120 per issue

Full page - 11" x 7 1/2" \$200 per issue

Business Card - \$25 per issue

Inside This Issue

From the President..... 3
 New Members 3
 New Faces in the State Legislature 5
 Upcoming Events..... 7
 What We Do..... 7
 What Does a "Scan Job" Look Like?..... 9
 Surveyors Are _____ - You Can Fill in the Blank 13
 Government Affairs Update..... 15
 Welcome to the 21st Century..... 17
 39th Annual Conference & Technology Exhibition 18

Advertisers

Allen Precision Equipment..... 12
 Berntsen 16
 E&O Liability Consultants, Inc. 14
 Earl Dudley, Inc..... 10
 Hayes Instrument Co. 4
 Precision Products/Trimble 6

Affiliate Members

ACES Equipment & Supply 615-833-8088
 Greenwell Land Surveys 423-477-4481
 Hayes Instrument Co., Inc. 931-684-0555
 ICM of Memphis 901-647-5888
 Kucera International 919-219-8808
 Mapping Technologies 615-230-8001
 Photo Science..... 859-277-8700
 Precision Products..... 615-242-3762
 Tri City Blueprint & Supply Co..... 276-466-8880
 Tuck Engineering 276-523-4669

Sustaining Members

Burrow & Cravens 615-252-2502
 Crow Friedman Group-Nashville..... 615-383-0072
 Crow Friedman Group-Memphis..... 901-820-0400
 E&O Liability Consultants, Inc. 800-853-6133
 Earl Dudley Associates 615-885-1275
 Insurance Services Corporation of America (ISCA) 800-849-4535
 Leica GeoSystems HDS 615-585-0689
 Younts Insurance Agency, Inc. 336-238-1053

2007 Executive Committee

President	Jay Caughman	Memphis, TN	jcaughman@allenhoshall.com
Vice President	Mario Forte	Chattanooga, TN	bpsincorp@aol.com
President-Elect	Benny Moorman	Knoxville, TN	bmoorman@benchmark-assoc.com
Secretary/Treasurer	Jimmy Cleveland	Brighton, TN	jesurvey@netzero.net
Past President	Galyon Northeutt	Antioch, TN	galyonnortheutt@earthlink.net

The Tennessee Association of Professional Surveyors (TAPS) is dedicated to preserving the heritage of surveying; promoting the profession in Tennessee as the forum for developing ideals that advance the social, professional and ethical conduct of all surveyors; and provide opportunity for educational, scientific, and technological advancement.

From the President

by Jay Caughman, 2007 President



I want to wish everyone a happy new year and hope that you and your business prosper through 2007. I'm especially appreciative of you allowing me the opportunity to serve as the President of TAPS and am looking forward to a productive year representing all the land surveyors of Tennessee.

The upcoming TAPS convention is scheduled for March 15-17 at the Marriott Hotel Cool Springs convention center. It seems each year's convention gets bigger and better and this year is no exception. Mario Forte, the TAPS convention chairman, has lined up an outstanding list of seminars and speakers allowing you a wide selection to choose from. Whether you prefer history or technical, theory or science, you won't be disappointed. Kudos to Mario for raising the bar yet again. I look forward to personally seeing each of you at the convention.

Among the many items of interest at this year's convention is a 1-PDH seminar on the proposed changes to the TAPS Constitution. Each TAPS member will soon be receiving in the mail a ballot and explanation of the proposed changes for your review. The seminar is an opportunity for you to ask questions about the proposed changes and place your vote if you haven't already done so by mail. The TAPS Board and a select committee has spent many hours reviewing and discussing these proposed changes and feel that they will allow more opportunity for members to get involved as well as addressing several minor "housekeeping" issues. I hope you'll take the time to review each change and voice your vote.

Another item of interest is the recent association created between TAPS and E&O Liability Consultants, Inc. The recent increase in annual TAPS dues has afforded you, as a member of TAPS, to acquire a life insurance policy as a part of your paid

membership. This \$10,000 life insurance policy is included as a benefit to TAPS membership at no additional charge or health screening. You do need to fill out some basic paperwork and beneficiary forms. Contact Rikki at E&O (800-853-6133) if you need the paperwork. Additional insurance may also be obtained for your family or employees at a discounted rate. This is a great opportunity for all TAPS members that should not be overlooked. E&O Liability Consultants has also arranged for TAPS members to acquire Long Term Care insurance at a discounted rate. The TAPS website will be adding a link to E&O Liability Consultants which will allow you to download information.

The TAPS Board is continuing to keep a sharp eye on legislation being proposed for the new year. Our lobbyist, Mr. Jay West, is keeping us up-to-date on issues that may affect land surveyors and is introducing new legislation on our behalf to benefit our cause. I encourage you to contact your local TAPS directors about legislation being proposed and any issues

about which you have concerns. Be acquainted with and prepared to contact your state representative when called upon by TAPS.

An item of recent concern to me is the future of the four-year Surveying and Mapping degree program at ETSU. The program has and continues to produce outstanding graduates, most of whom become licensed surveyors in just a few years out of school. This is a valuable resource for the future of land surveying in Tennessee. However, recent departures in staff have caused a strain on qualified instructors. TAPS has and will continue to support this program in any way it can.

Again, I thank you for allowing me the opportunity to serve you as President. I encourage you to get involved with your local chapter and voice any concerns you have about land surveying issues. I look forward to seeing you at the convention in March. ♦

Welcome New Members

Thomas Chandler
Greeneville, TN

Jared Cobb
Nashville, TN

Taylor Dillehay
Mt. Juliet, TN

James Gellenthin
Smithfield, NC

Jeremy Horn
Kingsport, TN

James C. Phillips
Oak Ridge, TN

Nick Phipps
Chattanooga, TN

Derrick Story
Charlotte, TN

Trig-Star packets are now available. Contact TAPS office at 615-860-9311 or tapsinc_bellsouth.net

Get in Line. [with the new TDOT GPS Reference Network]



Meet us at TAPS to find out about our special deals on Topcon GPS.

TD ↑ T

 **TOPCON**

[TDOT Topcon VRS Reference System]

Tennessee DOT has chosen Topcon's TopNET solution for the state's GPS Reference Network. Hayes Instrument Co. is proud to be the supplier for the nation's premiere GPS VRS Network. Tennessee will have the World's First three constellation network, utilizing all available satellites for accuracy and productivity, now and in the future.

[Visit us at TAPS]

Visit the Hayes booth at the TAPS 39th Annual Conference (March 15-16) to learn more about the state's new GPS Reference Network and how it can benefit you. Hayes will be presenting a movie detailing the TopNET experience on Thursday afternoon. As always, we will have some show specials and free giveaways at our booth. So come by to find out more.

[For more info go to www.hayeshelp/getinline]

- Read the TDOT Press Release
- View the Network Coverage map of TN
- Find out more about show specials & giveaways
- Watch the 'Get in Line' trailer
- Sign up for 'Take a Number, Get a Prize'



www.hayesinstrument.com | 800-251-1280
for tech resources: www.hayeshelp.com
©2007 Hayes Instrument Company

New Faces in the State Legislature

by Jay West and Hope Jackson, TAPS lobbyists

When the Tennessee General Assembly reconvened on January 9, 2007, there were many new faces in the halls of Legislative Plaza. In the Senate, there were seven new state senators. The House has seventeen new members.

Dewayne Bunch, a Republican from Cleveland; **Paul Stanley**, a Republican from Germantown; and **Bo Watson**, a Republican from Hixson, all successfully moved from the House seats they had held to the Senate. Bunch, an attorney and educator, previously served four terms as the State Representative for the 24th District in Bradley County. Stanley, a financial advisor, served three terms in the House representing the 96th District located in Shelby County. Watson, a physical therapist, served one term representing House District 31, covering Hamilton and Rhea counties.

The other four new members of the Senate are **Ophelia Ford**, a Democrat from Memphis; **Lowe Finney**, a Democrat from Jackson; **Reginald Tate**, a Democrat from Memphis; and **Jack Johnson**, a Republican from Brentwood.

Ford served briefly in the Senate last year after winning the seat in a special election after her brother John resigned from the seat following his indictment in the Tennessee Waltz bribery sting. The Senate then voted to void Ophelia Ford's election due to voting irregularities by poll workers. Ford, however, regained her seat in the Senate after defeating her opponent in the regular general election. She will represent the 29th Senate District in Shelby County.

Finney, an attorney and relative of former Gov. Ned McWherter, defeated Don McLeary, who had held the seat. McLeary was originally elected as a Democrat but switched parties to become a Republican in the spring of this year. Finney's victory may allow the Democrats to keep the Republican

majority from gaining control of the speaker's seat that Lt. Gov. John Wilder has held since 1971.

Reginald Tate, an architect from Memphis, will represent the 33rd Senate District in Shelby County. Tate replaces Kathryn Bowers, who briefly held the seat after Roscoe Dixon resigned in January of 2006. Both Bowers and Dixon were indicted in the Tennessee Waltz sting. Bowers is awaiting trial. Dixon is currently serving a five-year sentence for bribery. Jack Johnson, a financial advisor from Brentwood, will serve as State Senator in the 23rd Senate District, the seat formerly held by Jim Bryson. Bryson gave up the seat to run for Governor.

Finally, there will be a new Senator from the 30th Senate District in Shelby County. The seat was vacated by Steve Cohen, who resigned after being elected to Congress. Cohen will fill the U.S. House seat Harold Ford, Jr. gave up to run for the U.S. Senate. Shelby County will hold a special election to fill the seat. The election for his seat will be on the same date as another vacated Memphis seat in the Legislature that had been held by Rep. Henri Brooks. Brooks resigned to join the Shelby County Commission in August. The primary for the special election is scheduled for January 25 and the general election for March 13.

In the House, there will be seventeen new faces, eleven Republicans and six Democrats. The overall makeup of the House will remain the same. **Eddie Bass**, a Democrat from Prospect, will represent the 65th House District covering Giles and Marshall counties. He is also the Sheriff for Giles County. **Mike Bell**, a Republican from Riceville, will represent the 23rd House District (McMinn and Monroe counties). Bell is a beef cattle farmer and small business owner. In the 66th House District, **Robert Bibb**, a Democrat from Springfield, will represent Robertson County. Bibb is an

economic development officer for the Middle Tennessee Industrial Development Association. **Kevin Brooks**, a Republican from Cleveland, will be the State Representative for the 24th District (Bradley County). Brooks works in public relations and conference management. In the 31st House District, composed of Hamilton and Rhea counties, **Jim Cobb**, a Republican from Spring City, will be the new Representative. Cobb is a retired TVA manager.

Jim Coley, a Republican from Shelby County, will represent the 97th House District. Coley is a civics teacher at Bolton High School. In the 42nd House District, representing Putnam County, **Henry Fincher**, a Democrat from Cookeville, will be the new Representative. Fincher in an attorney. **Richard Floyd**, a Republican from Chattanooga, will represent the 27th House District (Hamilton County). Floyd was a top executive with the local Coca-Cola Bottling Company prior to his retirement. **Dale Ford**, a Republican from Jonesborough, will serve as the Representative for the 6th House District (Hawkins and Washington counties). He is a retired Major League Baseball umpire. **Brenda Gilmore**, a Democrat from Nashville, will represent the 54th House District. Gilmore also serves on the Metro Council. She is the Director of University Mail Services for Vanderbilt. **Ron Lollar**, a Republican from Shelby County, will represent the 99th House District. Lollar is a county employee and a member of the Shelby County School Board. **Jon Lundberg**, a Republican from Bristol, will represent the 1st House District covering Sullivan County. Lundberg, a former news broadcaster, is the founder and president of a media relations firm. In the 21st House District covering Loudon and Monroe counties, **Jimmy Matlock** will serve as State Represent-

continued on p. 7

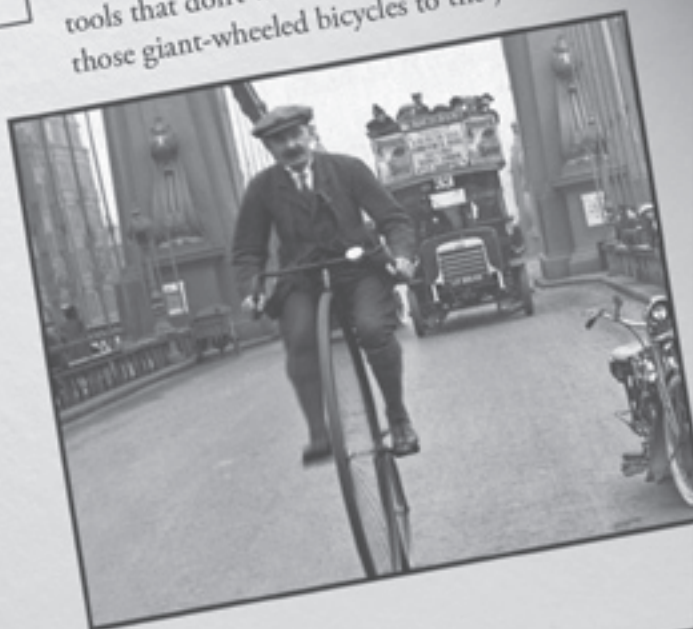
Choose your surveying system:

Check one

- I want the seamless integration that comes with the Trimble R6 GPS receiver.



- No thanks, I'll have a random collection of tools that don't work well. And I'll ride one of those giant-wheeled bicycles to the job site.



©2006, Trimble Navigation Limited. All rights reserved. Trimble and the Globe & Triangle logo are trademarks of Trimble Navigation Limited registered in the United States Patent and Trademark Office. 508-116

Now the choice is clear.

Introducing the Trimble® R6 GPS System. A new advanced Trimble GPS system is now at your fingertips - rugged and ready to work as hard as you do. The Trimble R6 GPS receiver integrates seamlessly with the Trimble TSC2™ controller and powerful Trimble field and office software to bring you a complete solution for effortless, efficient surveying.

Flexible options, such as Trimble R-Track technology for GLONASS support and internal radio upgrades, let you fine-tune your system to match your unique needs.

The new Trimble R6 GPS system is an important component of Trimble's Connected Site model. Learn more about its seamless integration at www.trimble.com/newtrimbler6.



 **Trimble.**

**FOR MORE
INFORMATION
CALL YOUR
TRIMBLE DEALER**

**Advance
Precision Products**
Nashville, TN
800-621-6769

**Advance
Precision Products**
Knoxville, TN
800-521-7761

**Advance
Precision Products**
Chattanooga, TN
800-231-1707

**Navigation
Electronics, Inc.**
Memphis, TN
800-949-1446

New Faces, cont. from p. 5

tative. Matlock, a Republican from Lenoir City, owns a tire service company. **Steve McManus**, a Republican from Cordova, will represent the 96th House District (Shelby County). McManus is an investment advisor. **Joe Pitts**, a Democrat from Clarksville, will represent the 67th House District (Montgomery). Pitts is a Vice President at Planters Bank. **Kent Williams**, a Republican from Elizabethton, will represent the 4th House District (Carter County). Williams is a restaurant owner and former TDOT employee. The final new face in the House will fill the seat for the 92nd House District. Henri Brooks, a Democrat from Memphis, resigned from her position after winning a seat on the Shelby County Commission. ♦

Garrett & Associates wins "Top Gun" at the Middle East Chapter Shootout!

Upcoming Events

TAPS 39th Annual Conference and Technology Exhibition

March 14-17, 2007

Marriott Hotel Cool Springs
Franklin, TN

TAPS 40th Anniversary Conference and Technology Exhibition

March 12-15, 2008

Marriott Hotel Cool Springs
Franklin, TN

TAPS Calendar, News & Updates, Meetings & Seminars

www.taps-inc.com

What We Do

Murry T. Jenkins, Professional Land Surveyor

Playing a friendly game of pool on a fall night in 1988, a gentleman asked me, "What do you do for a living?" At the time, just a few months out of high school working nights in a factory, my answer was "nothing interesting." The next question was, "Have you ever thought about surveying?" Well, from that point on the conversation got interesting, and the next week I was working on a survey crew. Little did I know where that would take me or what it would make of me. Over the course of eighteen years, it took me from a kid just wanting to try something new to a thirty-something-year-old professional land surveyor who can still remember his first day at work and the stench of that ragged old GMC 4x4 that was considered the Survey Truck. Well, over those years other things evolved that I had no idea were taking place.

I also became a *salesman* of my services; a *thief* to those who felt they lost property; a *hero* to those who gained it; a *detective* in search of those lost descriptions and plats; a *historian*, because in order to do my job properly, I have to know the techniques used by the preceding surveyors in my region; a *forensic scientist* looking for that tiny piece of fence in a 50-inch red oak or any clue, no matter how well hidden, to help determine the absolute answer; a *magician* for pulling some of those not-so-absolute answers out of a hat; a *botanist*, because plant identification is a extremely important thing (wiping with poison ivy can be very irritating); a *computer repairman*, because it's 10:00 p.m. when the computer crashes and it has to be finished by morning; a *doctor* for those breaks and sprains

that were splinted with wood stakes and flagging and the cuts that should have had stitches; a *forester*, because to many crew members' disbelief, all trees aren't pines or oaks; a *geologist*, because I have to know the difference in an outcropping of rocks and a rock pile; a *photographer* for everyone who wanted their picture taken; a *psychotherapist* to those property owners who just don't understand; a *referee* between those who thought I was a hero and those who thought I was a thief; a *guidance counselor* to

***Without those who
saw that spark in your
eyes and gave you the
opportunity to make
your mistakes and
learn from them, you
wouldn't be who or
where you are today.***

those employees who need somewhere to turn when troubled; a *psychic*, because as soon as I set foot on the property I'm expected to know if the fences are on the line, where the

corners are supposed to be and how many acres are left; a *geographer*, because I have to be able to retrace an old river or creek bed that was filled in when the drainage district took over.

I can't consider myself, by any means, an expert in any of these other fields, but it never ceases to amaze me how many hats we have to wear to be surveyors. I don't think there are many other professions or occupations that require the diversity that is required by us on a daily basis.

Just remember, without those who saw that spark in your eyes and gave you the opportunity to make your mistakes and learn from them, you wouldn't be who or where you are today. So I challenge each of you to have patience when the time comes, because if we are not there to mentor, encourage and learn from the next generation, we will be letting our predecessors and profession down. So in closing, I thank you, Mr. Key, for introducing me to this wonderful profession. ♦



Outgoing President Galyon Northcutt passes the gavel to incoming President Jay Caughman.



Tim Goad, Bruce McClellan and Mike Freeman take their oath of office for the new leadership year.



2007/2008 TAPS Leadership

Jay Caughman, President
Benny Moorman, President Elect
Jimmy Cleveland, Secretary/Treasurer
Galyon Northcutt, Past President
Mario Forte, Vice President

Kirk Duclos, DAL Middle
Terry Greenwell, DAL East
Paul Henson, DAL West

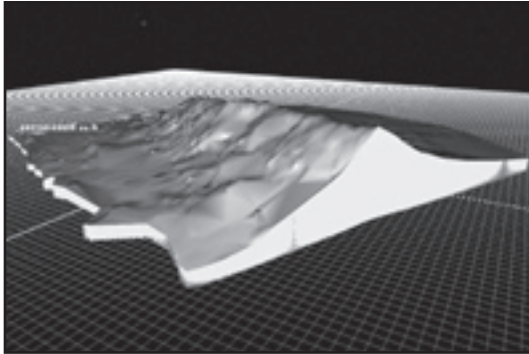
Chapter Directors

Northeast - Freddie Alley & Tim Lingerfelt
Middle East - Bruce McClellan & Brennon Garrett
South East - Alvin Cook & Dan McKenzie
Upper Cumberland - Tim Goad & Mike Freeman
Middle - Kirk Duclos & Galyon Northcutt
South Middle - Dallas Cook & Steve Caffey
West - Jim Wiles & Tate Jenkins
Southwest - Jim Helton & Mark Sorsby
Northwest- Bob Nichols & Tommy Young

What Does a “Scan Job” Look Like?

by Michael W. Harvey, LSIT

So, what does the proverbial “scan job” look like? Well, it looks like every project. This usually gets the “you have no idea what you are talking about” look from most people. Now obviously, there are a few jobs where you would not use a scanner, but there are also jobs out there where you would not use GPS, and certain types of Total Stations. So the scan job question begs to be answered with another question. Would you use GPS in the middle of the woods for a massive boundary survey? Would you use a first order Total Station for locating wetland flags in the middle of a 100-acre parcel? Do you use a total station to stake out a point five feet from your set-up? (What?!? Are you actually saying I should use a steel tape to measure that?!? I don't even think I got one in the truck!) Well the answer to those questions is probably not, or not for the whole task.



The Myth

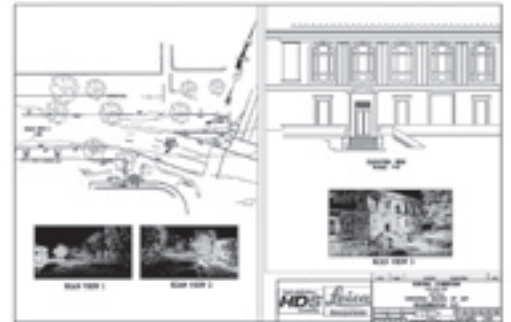
So let's explore this “scan job” myth. Was there ever such a thing? Well, back in the late 1990s when scanning was being introduced to the world, a scan job was very real. During the days where scanners had a very limited field of view, an argument could be made about “scan jobs” as well. However, with today's scanners that have a full dome field of view, the possibilities are endless. Does that mean that there are NO “scan jobs”? Of course not. It means that the size and type of job for a scanner has greatly increased. Most companies that I visit have a well rounded portfolio of projects, including ALTAs, route surveys, bridge surveys, large boundary, buildings, etc. Sound familiar? All of those listed above are possible candidates for a scanner. There are always those companies that say that most of their work is raw land surveys. Should they consider the possible ownership of a scanner? I would say the answer would be not yet. However, it does



not mean that they shouldn't seek out the help of a fellow surveyor who does have a scanner when an opportunity presents itself.

Example 1

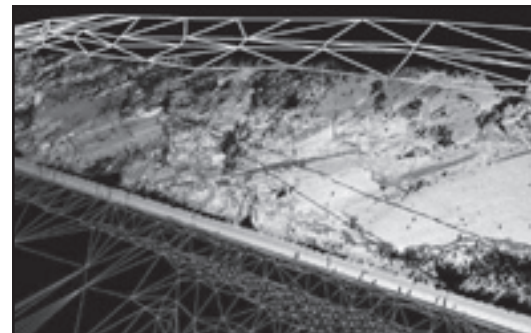
Let's take a few moments to look at some specific projects. Here is our first one. This would be a street intersection (has tall street trees) and a specific building of interest. A topographic plan needs to be provided along with a 2D elevation view of the building. Total project area is about 1.3 acres.



What would the preferred method for the field collection be? You could make a strong argument for TPS. Since the trees might interfere with GPS, you may or may not get the proper coverage. What about scanning? Hmmmm, intersection means possible safety issue. Elevation plan could mean a nightmare for the CAD tech. What kind of numbers would you estimate if the TPS methodology had been used? I was told three days in the field and two days in the office. As you can see from the plan snapshot, scanning was utilized. The field time was 2.5 hours and the drafting time was 7 hours. Charge a lump sum for this survey and I smell a hefty profit with those kinds of numbers. Oh, need I remind you that surveying is NOT a non-profit profession?!?

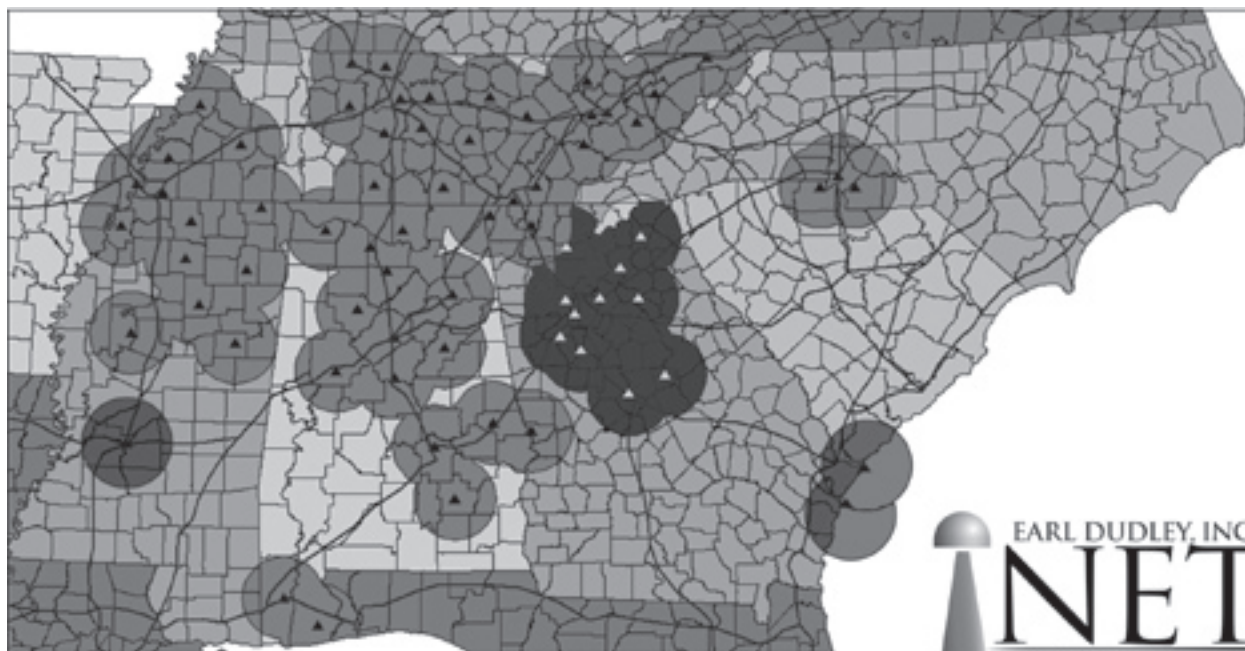
Example 2

Okay, next project. You are to survey 1600' of a jagged rock face along a very busy interstate. Limits are to extend from median of the road to 100' past the top of the rock or to the right of way line, whichever is closer. The deliverable will primarily be a TIN surface with cross-sections. Several possible methods could be utilized here.



TPS, Close Range Photography, and scanning all could be considered. Again, examine the conditions:

continued on p. 11



GPS REFERENCE NETWORK

Imagine the Possibilities

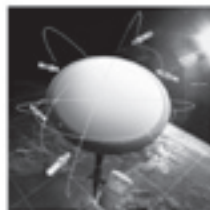
WHAT IS POSSIBLE? Imagine stepping out of your truck with a single GPS rover and to be working with survey-grade accuracy in under 60 seconds, with no need to setup a base, no need to look for control, and no need to sit and wait for hours for a solution. Imagine the possibilities!

HARD TO IMAGINE? Earl Dudley, Inc. has the largest multi-state GPS reference station network in North America, iNET. Even though GPS is not a new technology, this network presents a dramatic change in the way GPS can be used in the Southeast! Earl Dudley and Leica Geosystems have truly taken RTK GPS to a new level. With RTK coverage from Mobile, Alabama to Nashville and Memphis, Tennessee to Charlotte, North Carolina, Earl Dudley's iNET Reference Station Network represents the evolution of GPS and a REVOLUTION in accuracy, reliability, speed and productivity. This is truly the most intelligent, innovative, GPS infrastructure in operation today! Call today. We only need five minutes to change the way you work.



EARL DUDLEY INET HIGHLIGHTS

- Centimeter & Sub-meter level positioning possible thru much of the Southeast
- TRUE Network Corrections available in Real-Time
- Unlimited applications for surveying, engineering, machine control, GIS, mapping, planning, monumentation, photogrammetry, etc.
- Production increases of 50—75% possible
- Boost accuracy and reliability in the field
- Service and support like no one else in the business



EARL DUDLEY, INC.
GEO SYSTEMS

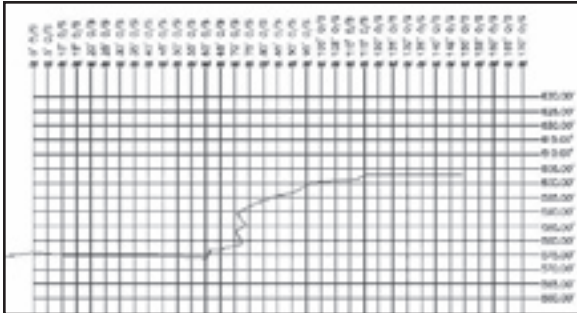
- when it has to be right

Leica
Geosystems

1838 ELM HILL PIKE, SUITE 133 | NASHVILLE, TENNESSEE 37210
5352 FIRST AVENUE NORTH | BIRMINGHAM, ALABAMA 35212
1-615-885-1274 | 1-800-232-0096 | www.earldudley.com

Scan Job, cont from p. 9

Busy intersection, tall rock face, and major undulating surfaces. What about a combination of methods? Remember, scanning is another tool in the tool box. In this case, that is exactly what was done. When the site inspection was done, the tree line was very close to the top of the rock face. So TPS was used to capture the ground data beyond the tree line (top lines), and scanning was used to capture the rock face.

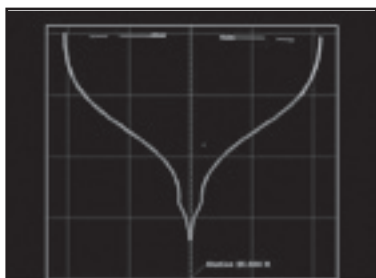
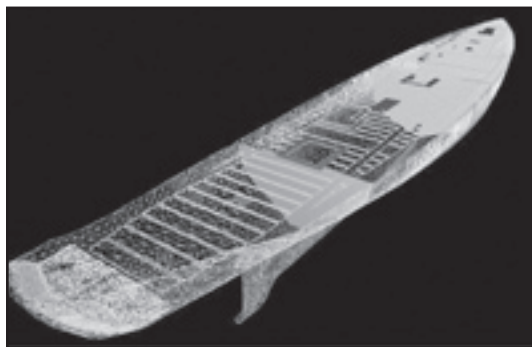


From the snapshot, the orange lines in the road and the solid mesh were from the scan data. Scan data yields correct cross-section overhangs without the unsightly “spikes” that most CAD packages create during the TIN creation process. So you get a very realistic looking cross-section. What about the metrics? One day in the field (two crews) and three days in the office. The best thing, nobody had to get close to the road! Good surveyors are becoming hard to find these days. Let’s keep the ones we have healthy.

Example 3

Last example. (I’ll give you a spoiler. This IS a scan job.) The project is a 135’ long steamship hull. You need to measure the outside and the inside along with any remaining deck beams, drive shaft, and bulkheads. I don’t think there is any other way to successfully execute this project without a scanner. The deliverable is a TIN of the hull, cross sections every 5’ with references to the bulkheads.

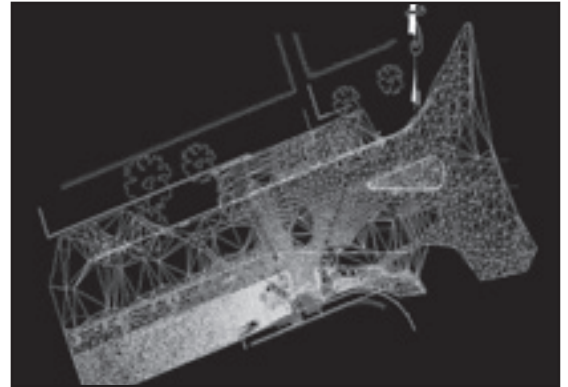
After a day of scanning and a day in the office, this project was completed. Once again, a lump sum needs to be considered. Making a TIN of these types of irregular shapes is much easier with point-cloud processing software. You are not limited to the “z” direction like you are in most CAD packages. So a project like this ship,



and the rock face that we talked about, are completed with greater ease.

Software

The point cloud processing software is a major piece of a so-called “scan job.” I like to think of it as an extension of reality. Take TIN creation for example. How many of you think that TIN creation is a pleasant process in CAD? The last CAD software that actually worked well and made any sense to me was AutoCAD R12 with Softdesk 8. Most current routines seem a little too involved for my liking. So



with point cloud processing software, why not make the TIN there? As a user, you have so much more freedom to rotate/ pan/zoom in this environment compared to a CAD package. So how do you bring the TIN over to CAD? This process is perfect for LandXML. AutoCAD knows it is a surface when you bring it over so any guess work is removed. Furthermore, with a scan, since there are so many points, in several instances break line(s) are not needed. The point cloud package tends to follow the curves of the topography naturally. That is a nice benefit. As you can see from the snapshot below, the TIN was created in a point cloud software and brought over to CAD. The total process of importing this TIN, and creating contours in CAD took under 10 minutes. That is music to a CAD tech’s ears!

Conclusion

With today’s current surveying technology, there is a greater variety of tools available for the professional to choose from. Laser scanning is here to stay. Even if you don’t own a scanner, start to think of uses and projects in which you could utilize the numerous benefits that scanning can bring. Each job needs to be considered. Is this a “scan job,” or more appropriately, can I use a scanner on the whole project, or a portion of it? While there still might be a “scan job” like the ship or maybe pipe racks at a plant, in the Civil/Survey world, there is no such thing. Laser scanning is here to help us make money. That is what we are in business for! ♦



“There is always some kid who is seeing me for the first time. I owe him my best.”



ALLEN PRECISION EQUIPMENT

800-241-6223

TOPCON GR-3

 **TOPCON**

*Announcing
the next
generation
of Satellite
Positioning!*

**WORLD'S
FIRST**

GPS, Glonass,
Galileo capable
GNSS receiver



**PARADIGM-G3 CHIP
TECHNOLOGY**



APE Service Department

Factory-Trained Technicians

Fast Turn Around

Largest Parts Inventory in the Country

(IF WE DON'T HAVE IT, NOBODY DOES!)

*Combining Experience, Knowledge and Skill –
with service from Allen Precision your
equipment will be survey-ready!*

WE ENJOY REPAIRING ALL BRANDS/ALL MODELS



1-800-241-6223 • www.allenprecision.com

Surveyors Are _____ – You Can Fill In the Blank

by Greg Yoko, Editor, Land Development Today

Have you noticed? Surveyors never leave the office, even when they try to go on vacation. For the past three years, I've been a regular "lurker" online at POB magazine's bulletin board, www.RPLS.com. My reasons for "listening" online were educational and professional. I didn't realize it would become an addiction.

After reviewing thousands of postings from the surveying community, it is clear that I am not alone. It seems to me that the surveying profession either attracts people who have certain characteristics or it somehow develops certain characteristics in people that make them passionate about their profession. It's a very interesting, yet elusive, phenomenon to grasp for those of us who aren't directly in the surveying profession.

I recently started searching for a word to describe my impression of the way surveyors feel about their profession. I opened up my old 1986 Student Edition of Webster's Dictionary and 1993 New Webster's Thesaurus and started my search. The first word that came to mind as a result of my situation was the word addict: "to devote or surrender (oneself) to something habitually or obsessively." I definitely remember reading about surveyors being devoted and I know I was becoming habitual in my twice-a-day (at least) trip to the message board. Obsessed? Well, I know from reading the board that this is not true. Webster's definition of obsess is to be constantly preoccupied and I've seen discussions on topics beyond the scope of surveying.

However, I needed another word. Obsessed just didn't match my perception. How about possessed? "Possessed: 1a (1): influenced or controlled by something (as an evil spirit or a passion) (2): MAD, CRAZED" This definitely has potential. I've read plenty of TED DURA DURA threads to

know that some surveyors may very well be under the influence or control of something. Some have even intimated that it could be "an evil spirit or passion." Passion. Now I'm getting close. "Passion: 4a (1): EMOTION (2) plural: the emotions as distinguished from reason b: intense, driving, or overmastering feeling or conviction c: an outbreak of anger 5a: ardent affection." I have seen and read many instances of surveyors exhibiting intensity and conviction. But this isn't really what I am trying to describe.

Maybe some real examples from messages placed on the RPLS message board would help explain why I started this quest for a descriptive word in the first place. The thread of conversations that initiated all of this thought started in March. Various surveying professionals were discussing how they couldn't escape their surveying instincts—when they attempt to go on vacation. (Comments are attributed to the individual's RPLS sign-in name or alias.) The thread started off with this comment: "Just returned from a road trip (Park City - Olympics; It was great). Caught myself looking for ROW monuments at 85mph. Then I started to think of all the other things I do: pace distances walking in the mall or to and from the bar; finding PK nails and looking for point-pair; reading ANY lath or stake I find; guessing radial distances on Interstate curves...Someone please tell me I'm not alone—or at least not crazy..."

Based upon the responses that followed, it was hard to answer the question as to his sanity because it was obvious that he wasn't alone. "When going for a walk, I catch myself counting my paces," claimed a responder. "When skiing in Colorado, I notice some paint on a tree, and start thinking about, 'Where's the Section Corner'..." Another chimed in, "Took photos of the property corners set in

the sidewalk at the Alamo and control monument caps at Disney World... My wife thinks I'm crazy." Another surveyor agreed that his spouse thinks the mental sanitarium may be an option. "Loved seeing all those brass disks in Disney World with Mickey heads on them. Spent half the vacation looking at them...Wife thinks I'm nuts." Some comments were introspective. "Well I admit that many times while hiking I have taken detours of a mile or more to check for a triangulation station shown on the topo quad just to kneel down and touch it and feel the history." Another expressed determination. "Vacationing in Hawaii, I told my wife I am not leaving until I find some evidence of a survey. Got it, a chiseled cross in concrete. O.K. we can leave." Yet, the common thought prevailed: "I drive my wife crazy. I can spot orange paint on control points, stakes, bits of orange flagging going down the road anywhere, anytime."

Finally, a comment from a regular on the message board is really what got me into this silly exercise of finding a definition: "Bored out of my mind at my parents' house in Illinois over Thanksgiving, what do I do? Go out and dig up property corners all over the neighborhood...Driving down the highway I see fences collide in the middle of nowhere and I presume there is a section corner over there. Always looking for nails and disks in the sidewalk or mag nails in the centerline. Surveying isn't a profession—it's an affliction..." Ahhhh! Surveying is an affliction! More than two months later, in a different thread, a similar vein was resurrected. "...My family hates that whenever we go on vacation, I look for surveyors, property pins, reference points, I sometimes go into intersections to see what if anything is there. I once stopped and

continued on p. 16

E&O LIABILITY

Consultants Inc.



DESIGNING INSURANCE TO FIT YOUR NEEDS

Professional Liability / Errors & Omissions
General Liability ▪ Workers Comp ▪ Auto
Inland Marine ▪ Property ▪ Umbrella
Life ▪ Disability ▪ Long Term Care
Health ▪ Dental



P.O. Box 638
Thomasville, NC 27361
800-853-6133 phone ▪ **866-833-6910** fax
www.eoliability.com

***Be Sure to Stop by Our Booth During the TAPS
39th Annual Conference & Technology Exhibition!***

Member of TAPS Since 1990

Government Affairs Update

The Changing Face of Congress

As a result of the November 7 election, Congress will have a new look. The 110th Congress will be controlled by Democrats in the House of Representatives and the Senate. Many of our friends in Congress won their elections; however, a good friend of ours in the Senate, Senator George Allen of Virginia, lost his reelection bid. Senator Allen was a co-sponsor of the Senate Resolution honoring National Surveyor's Week.

Although nothing is official until January, here is a list of the prospective Committee Chairmen for Congressional Committees that affect surveyors:

In the Senate, the Majority Leader is expected to be Harry Reid of Nevada. The Chairman of the Appropriations Committee is expected to be Robert Byrd of West Virginia. The Chairman of the Banking, Housing and Urban Affairs Committee (which controls RESPA issues) is expected to be Christopher Dodd of Connecticut. The Chairman of the Commerce, Science and Transportation Committee is expected to be Daniel Inouye of Hawaii, and the Chairman of the Energy and Natural Resources Committee (which controls USGS issues) is expected to be Jeff Bingaman of New Mexico. The Chairman of the Health, Education, Labor and Pensions Committee is expected to be Edward Kennedy, while the Chairman of the Small Business and Entrepreneurship Committee is expected to be John Kerry, both of Massachusetts. The Chairman of the Homeland Security and Government Affairs Committee is expected to be Joe Lieberman of Connecticut.

In the House of Representatives, the Speaker of the House is expected to be Nancy Pelosi and the Majority Leader is Steny Hoyer. The Chairman of the Appropriations Committee is expected to be David Obey of Wisconsin; the Chairman of the Education

and Workforce Committee is expected to be George Miller of California. The Chairman of the Government Reform Committee is expected to be Henry Waxman of California; the Chairman of the Homeland Security Committee is expected to be Bennie Thompson of Mississippi; the Chairman of the Resources Committee is expected to be Nick Rahall of West Virginia; the Chairman of the Science Committee is expected to be Bart Gordon of Tennessee and the Chairperson of the Small Business Committee is expected to be Nydia Velazquez of New York.

There are also many new members of Congress in both the House and the Senate. ACSM is working on getting introductory meetings with the new members to discuss our issues with them.

Final Push for H. Res. 518

THIS IS IT! After almost two years of hard work, we are coming down to the wire for getting our National Surveyor's Week bill through the House of Representatives this year. Congress will be working in December and will take up H. Res. 518, the National Surveyor's Week Resolution, if we can get a total of 50 co-sponsors on the bill. We were recently told by Rep. Adam Putnam's office (the sponsor of the resolution) that we have 38 co-sponsors. We need everybody's help for the final push. Please call or fax your Representative and ask them to co-sponsor H. Res. 518, the National Surveyor's Week Resolution, which is sponsored by Rep. Adam Putnam, and Rep. Bennie Thompson is the original co-sponsor. If you participated in Lobby Day, please review your list of contacts and follow up with the staff you met with and ask them to get their boss to co-sponsor the resolution. A link to the current co-sponsors is <http://thomas.loc.gov/cgi-bin/bdquery/z?d109:HE00518:@@P>; check the link frequently because the list hasn't been

updated. Thank you for your help!

Brooks Act Memo from Army Corps of Engineers

The Army Corps of Engineers recently released a Directive reinforcing its policy of using the Brooks Act for the procurement of A/E services. The Directive lays out FAR Part 36.601-4, which is the relevant law relating to this issue. The full Directive can be found here: http://www.wbdg.org/ccb/ARMYCOE/COEECB/ecb_20_06_12.pdf

Position Paper of FEMA Map Modernization Program

ACSM recently completed a position paper regarding FEMA's Map Modernization Program, which should be posted on the ACSM website soon. As you may know, ACSM has worked for several years with a number of relevant groups and associations to obtain federal funding for FEMA's Map Modernization Program. Unfortunately, the Map Modernization program is not going in the direction we hoped it would. The digitized maps being produced by FEMA are not accurate, and according to its recent midcourse adjustment report, FEMA plans to make several changes to the program, including updating maps in many parts of the country.

Our position paper will be used when we meet with Members of Congress and FEMA representatives on this issue. Look for the position paper on the ACSM website soon.

Update On the COFPAES Lawsuit

As you may know, last year COFPAES filed a lawsuit in federal court against the FAR Council regarding its application of the Brooks Act to the procurement of mapping services. As a result of the COFPAES lawsuit, the federal government filed a Motion to

continued on p. 16

Government Affairs, cont. from p. 15

Dismiss the lawsuit. A Federal judge recently denied the government's Motion to Dismiss at this point. For now, the lawsuit continues.

Interview with Former Congressman Jack Brooks, Author of the Brooks Act

Speaking of the Brooks Act, if you go to the COFPAES website, www.cofpaes.org, you will find an interview conducted by NSPE with former Congressman Jack Brooks, the author of the Brooks Act. It's an insightful interview in which the Congressman discusses his thoughts on his groundbreaking legislation.

For more of these updates, go to www.taps-inc.com. Click on helpful links Surveying ; click ACSM; click Government Affairs. ♦

**For all your shopping needs
TAPS Shopping Mall
www.taps-inc.com
TAPS & PAC Store**

Surveyors Are, cont. from p. 13

took a picture of a Mickey Mouse Brass cap at Epcot. I explain what those slopes stakes are really saying and I make comments about the markings, paint colors and flagging colors. They love me but think I am the biggest geek they know."

As you can see, the symptoms of this profession are alarming enough to cause spouses and family members to doubt the surveyor's sanity. It appears to afflict geeks and those who talk to themselves a lot. But the news is even worse. According to one wife, this "disease" may even be contagious! "I always thought my husband was wacko, nuts and crazy. Now I find he is not alone...my husband talks 'section corners and cut and fill' in his sleep. This 'affliction' seems to be contagious—now I'm looking for orange paint and stuff... oh gawd...My only question, is there a support group for us wives? Is there a cure?" If you are aware of any cures, coping mechanisms, or additional symptoms to watch for, please send them to me at [edi tor@LandDevelopmentToday.com](mailto:editor@LandDevelopmentToday.com). Providing this timely service to surveyors and their families may make this entire publication worthwhile! Oh yeah, if you know of other words that characterize the way surveyors feel about their profession, feel free to send those to me as well. And, by the way, inclusion of rpls.com posts will not be a regular practice of *Land Development Today*, but it certainly could be entertaining! You should check out the message board on your own, just beware of the consequences as expressed here. ♦

Reprinted with permission. Copyright Land Development Today, LLC.
www.landdevelopmenttoday.com

Berntsen. A world of survey markers and supplies at your fingertips.
To help you **make your mark on the world.**



Berntsen is there for you every step of the way.

- Most orders ship within 48 hours
- 24/7 online ordering
- State-of-the-art website
- Live online support
- Fast & easy ordering with *personalized* customer service
- New! Surveyor resources including FREE **training videos**
- The highest quality survey markers and supplies, *always*

Truly committed to helping you make your mark on the world.

Berntsen
Helping You Make Your Mark on the World.
www.berntsen.com | 877.686.8561

Welcome to the 21st Century: Wake Up and Smell the Premium Blend Coffee

by James Falk, CST Office IV

When industry-wide standards are discussed in the survey profession we usually debate tolerances, guidelines, rules and regulations pertaining to measurements and ethics such as requirements for ALTA/ACSM Land Title Surveys. Surveyors are required to comply with these types of professional standards, but when it comes to technical standards, surveyors generally take whatever liberties they deem necessary to illustrate their work, essentially a “do whatever you want” policy of drawing. This translates to an “every organization for itself” policy of establishing technical standards.

Twenty-nine years ago when I began working in the civil engineering department of a full service architectural engineering firm, technical standards were mostly drawing standards, i.e. drafting or line symbols, used on our hand-drafted topographic surveys and plats. Considering the basic visual aspects of a drawing, the “every organization for itself” practice has been adequate. Generally plans from different firms can be read with little reference to the legend, so there has never been a reason for industry-wide technical standards. However, with the advent of CAD, the final product is now referred to as a plot or hard copy, and though it reads the same as the hand-drafted version, computer procedures have generated the development of electronic technical standards. Moreover, clients are putting emphasis on the electronic drawings produced, requiring the technical standards used to be of a deliverable quality.

Electronic technical standards, e.g. CAD layer names and descriptor codes introduced with the electronic field book (not seen in the final product but a necessary part of the production process) vary between firms. Everyone “does whatever they want” in establishing their version of electronic technical standards, and the “every organization for itself” practice proves insufficient. You could say this assessment is irrelevant since your final product is a plot

or hard copy, but if you swap CAD files with other firms and clients you are often hindered by unfamiliar electronic technical standards. And regarding descriptor codes and other codes used in an electronic field book, they vary considerably between firms and are essentially undecipherable without a code list.

Does the survey industry have a complacent view of technical standards? Maybe, but not of our own volition—the National Society of Professional Surveyors (NSPS) is an organization dedicated to the advancement of the survey profession. Their mission statement is “NSPS strives to establish and further common interests, objectives, and political effort that would help bind the surveying profession into a unified body in the United States.” Throughout the long era of hand drafting there has never been a reason for industry-wide technical standards. That view has transitioned into the era of computer technology apparently without thought. Basically we’ve gone from using drafting boards and drafting instruments to computer screens and mouse clicks; from field surveying using baselines, transits and chaining to distance meters, and GPS satellites; from printing and sketching in a field book to keying in codes and recording data in an electronic field book; and from writer’s cramp to carpal tunnel syndrome. Welcome to the 21st century!

The absence of industry-wide technical standards, in the past, may have actually resulted from the lack of a mechanism for their development. The computer age has produced a technological infrastructure that is an obvious and natural mechanism for the development of electronic technical standards. The Internet allows us to communicate through electronic mail, transfer electronic files, access websites and download files. Also, we have the NSPS, an existing organization dedicated to unifying the surveying profession, who could act as a coordinating agency. Cohesion in the survey industry is a good thing, if

we could develop industry-wide codes/point descriptors. Colleges could add it to their survey class curriculum. State DOT’s and other agencies could adopt it. New employees could have knowledge and experience with a universal system allowing them to be immediately productive, and the survey industry could have specifications that they can require software developers to incorporate.

Survey crews entering codes and recording data in electronic field books are actually writing programs that are processed in the office. The operation in the field is not a perfect process and usually must be corrected or enhanced in the office. Use of a good survey code system is paramount to the coordination between field and office CAD work, because the codes help the processor to recognize what was surveyed and recorded. The more comprehensible the survey code system, the easier it’s going to be for the processor to decipher the information, find and edit erroneous recordings contained in the electronic field book. Survey crews will “write better programs” if they have more experience with, and a better understanding of, the survey code system, thereby reducing erroneous recordings.

As new technology has been introduced into the survey industry, we know that along with the improvements have come required procedures and knowledge to be learned, i.e. computer procedures and electronic technical standards. But as our industry modernizes we must remember that situations during the circumstances and limitations of the past need to be revised, and although historical views may translate into current technology, the fact is that mechanisms not available in the past could foster better solutions for the future. The future is now! We need to stop being content with the status quo, and wake up to the smell of premium blend coffee. ●

Reprinted with permission of the author. From the CST Newsletter Summer 2006 edition.

39TH ANNUAL CONFERENCE & TECHNOLOGY EXHIBITION

Exhibits: March 15-16, 2007 • Conference: March 15-17, 2007

Marriott Hotel Cool Springs • Franklin, Tennessee • 615-261-6100 • Total of 16 PDHs offered

WEDNESDAY, MARCH 14

5:00-7:00 pm	Display Company Sets Up Booths	Salons 6-10
7:00- 10:00 pm	Exhibitors Move Into Booths	Salons 6-10

THURSDAY, MARCH 15 (5 PDH)

7:00-9:00 am	Breakfast on your own	
8:00-9:00 am	Viewing of Exhibits	Salons 6-10
8:00-9:00 am	Registration Open <i>Exclusive sponsorship by Earl Dudley Associates, Birmingham, AL</i>	Conference Foyer
9:00-11:40 am	SESSION 1 (3 PDH) Seminar 1: "Insurance" – <i>Real claims and the importance of proper coverage</i> <i>Speakers: Don Friedman and David Garst</i> Seminar 2: "Storm Drainage" – <i>Designing a simple storm drainage system – bring your calculator.</i> <i>Speaker: Alvin Cook</i> Seminar 3: "Flood LOMC" – <i>How to complete FEMA Letters of Map correction</i> <i>Speaker: Bart Crattie</i> "T-DEC" – <i>Waters of the state; erosion control</i> <i>Speaker: Joe E. Holland</i> Seminar 4: "High Definition Surveying" – <i>3D laser scanning</i> <i>Speaker: Bruce Hook, Precision Products</i>	TBA
10:15-10:25 am	Break	Conference Foyer
11:40 am - 1:30 pm	Buffet Lunch	Conference Foyer
11:40 am - 1:30 pm	Viewing of Exhibits	Salons 6-10
1:30-3:10 pm	SESSION 2 (2 PDH) Exhibitor Workshops: Equipment and software demonstrations	TBA
3:10-7:00 pm	Exhibitor Reception/Viewing of Exhibits <i>Partial sponsorship by Hayes Instrument Company, Shelbyville, TN</i>	Salons 6-10
4:30 pm	Board of Directors/General Membership Meeting	TBA

FRIDAY, MARCH 16 (7 PDH)

7:00-8:00 am	Buffet Breakfast	Conference Foyer
7:00-9:00 am	Final Viewing of Exhibits	Salons 6-10
8:00-9:00 am	Registration Open	Conference Foyer
8:00 am - 5:00 pm	Certified Survey Technician	TBA

9:00-11:40 am	SESSION 1 (3 PDH) Seminar 1: "Insurance" – <i>Real claims and the importance of proper coverage</i> <i>Speakers: Don Friedman and David Garst</i> Seminar 2: "Storm Drainage" – <i>Designing a simple storm drainage system – bring your calculator.</i> <i>Speaker: Alvin Cook</i> Seminar 3: "Flood LOMC" – <i>How to complete FEMA Letters of Map correction</i> <i>Speaker: Bart Crattie</i> "T-DEC" – <i>Waters of the state; erosion control</i> <i>Speaker: Joe E. Holland</i> Seminar 4: "High Definition Surveying" – <i>3D laser scanning</i> <i>Speaker: Bruce Hook, Precision Products</i>	TBA
10:15-10:25 am	Break	Conference Foyer
11:40 am - 1:00 pm	Buffet Lunch	Conference Foyer
1:00-4:30 pm	SESSION 2 (4 PDH) Seminar 1: "ALTA (2005) Standards" <i>Speaker: Gary Kent</i> Seminar 2: "Evidence & Procedures" – <i>Covering Tennessee laws and fieldwork examples</i> <i>Speaker: Barry Savage</i>	Salon 5
2:40-2:50 pm	Break	Conference Foyer
4:30 pm	Reception	Hotel Lounge
7:00 pm	March Madness PAC Fundraiser Bash Sports/Casino theme	TBA

SATURDAY, MARCH 17 (4 PDH)

No viewing of exhibits

7:00-8:00 am	Breakfast	Conference Foyer
7:00-8:00 am	Past Presidents' Breakfast	Private Dining Room Restaurant
7:00-8:00 am	Registration Open	Conference Foyer
8:00-10:40 am	SESSION 1 (3 PDH) "ALTA Surveys for Field Personnel" <i>Speaker: Gary Kent</i>	Salons 1-5
9:15-9:25 am	Break	Conference Foyer
10:40-11:20 am	SESSION 2 TAPS Awards	Salons 1-5
11:20 am - 12:10 pm	SESSION 3 (1 PDH) Board of Directors – Bylaws and Constitution – Voting	Salons 1-5

SPEAKER INFORMATION

ALVIN COOK, PE., RLS

Alvin R. Cook, PE, RLS, is a native of Sevier County, Tennessee and attended Pittman Center High School (now Gatlinburg-Pittman). He is a graduate of Tennessee Technological University with a BS degree in Civil Engineering. He is licensed as a professional engineer in Tennessee and Georgia and a registered Land Surveyor in Tennessee. After working for engineering firms in Chattanooga, Morristown and Johnson City, Tennessee and Jacksonville, Florida, he opened his own office, ARC Consultants, in Chattanooga, in 1979 to provide engineering and surveying services. The firm transitioned to Cook & Spencer Consultants, Inc. in 1984 and continued to operate under this name until 2004. In 2004 Cook & Spencer Consultants closed and a new firm, Alvin R. Cook & Associates, LLC, was established. Mr. Cook has had 49 years of experience in civil engineering and surveying, including water and wastewater design, drainage, site design, subdivision design, stormwater pollution prevention plans, boundary surveys, topographic mapping and ALTA/ACSM surveys.



and facilities, natural gas transmission lines, dams, school and university facilities, airport runways, and electric transmission facilities. Mr. Garst also has substantial experience representing parties involved in disputes and contract negotiations over assisted living, nursing, condominium, hotel and other hospitality projects across the southeast United States.

JOE E. HOLLAND, P.E., RLS.

Field Office Manager, Division of Water Pollution Control Tennessee Department of Environment & Conservation. Mr. Holland holds a B.Sc. Agricultural Engineering degree from the University of Tennessee. He comes from a family of surveyors in the Hendersonville and Lafayette, Tennessee areas. His father, Joe, is a retired surveyor and his brother, Mike, practices in Lafayette. Mr. Holland is a Tennessee Registered Professional Engineer and Land Surveyor and has 34 years experience with the TDEC, Division of Water Pollution Control.

BART CRATTIE, RLS

C. Barton Crattie, LS received a Bachelor of Fine Arts degree from Murray State University in 1977. He began surveying with the KY DOT in 1978. He received a surveying certificate from Chattanooga State Technical Community College. Bart is a Licensed Land Surveyor in Tennessee and Georgia and is a member of numerous professional organizations (TAPS, SAMSOG, NSPS) as well as a life member of the Surveyor's Historical Society and a member of the Association of State Floodplain Managers, Inc.



Bruce has a Bachelor of Surveying degree from the University of Otago located in Dunedin, New Zealand. Upon graduating from college in 2001, Bruce has been working for Trimble Navigation developing core surveying technologies. He has been involved with the development of the Trimble S6 robotic total station, Trimble R8 GPS equipment and Trimble Survey Controller software. For the past two years Bruce has been working in Support and Application for the Trimble 3D Laser Scanning team in Paris, France. Bruce was recently promoted to the position of Applications Manager of 3D Laser Scanning for all of the Americas. His focus is on training and supporting Trimble Dealers on 3D Laser Scanning. This allows dealers to be able to support Trimble User's at the local level. Through Bruce's help, dealers will be trained to offer classes and support their 3D Scanning customers.

BRUCE HOOK

DONALD R. FRIEDMAN

Donald A. Friedman is a partner and Vice President of Crow Friedman Group, LLC, the exclusive agency for XL Design Professional Insurance Company in Tennessee. Located in Nashville, his branch office specializes in the professional liability needs of architect and engineering firms in Middle and East Tennessee. Mr. Friedman is a graduate of Rider University with a degree in Accounting. A former director on the board of the AIA (American Institute of Architects), Middle Tennessee Chapter, Mr. Friedman currently serves as past president on the board of PLAN (Professional Liability Agents Network), a National Association of 56 Professional Liability Specialist Agencies in the U.S., Canada and Puerto Rico. He was named "Producer of the Year in 1999" and again in 2001 by DPIC Companies.

DAVID N. GARST

David N. Garst practices principally in the areas of architects and engineers professional liability, construction defect litigation, construction contract law, and commercial litigation. He is the chair of the firm's Nashville Construction Law Practice Group. He has been named to "Best Lawyers in America" for 2007 in the construction practice area.

For 20 years, Mr. Garst has represented architects, engineers, surveyors, contractors, subcontractors, suppliers, building owners, and developers on a variety of projects both locally and regionally. He has substantial experience in the defense of design professionals, and has represented architects and engineers in hundreds of claims, lawsuits, arbitration matters, and disciplinary proceedings before Boards of Architectural and Engineering Examiners. His experience includes claims and litigation over many project types, including commercial, industrial, retail, and residential buildings, subdivisions and industrial parks, water and wastewater plants

GARY R. KENT

Gary Kent is Integrated Services Director for The Schneider Corporation, a land surveying, GIS and consulting firm based in Indianapolis, with offices in Tennessee, North Carolina and Iowa. He is past President of the American Congress on Surveying and Mapping and the Indiana Society of Professional Land Surveyors, and is chair of the NSPS and ALTA committees responsible for the ALTA/ACSM standards. Gary sits on the Indiana State Board of Registration for Land Surveyors and is currently vice-chairman. He is a certified instructor for the International Right of Way Association and also teaches part-time at Purdue University, where he has received two "Excellence in Teaching" awards. Gary is a regular speaker across the country, and he writes columns for "The American Surveyor" (called "Reconnaissance") and for the ACSM Bulletin.



BARRY SAVAGE, RLS

Mr. Savage has a BS in Civil Engineering Technology from the University of Tennessee at Martin. He has been in the surveying field for 25 years and has been in private practice for 13 years. He specializes in boundary disputes and dispute resolution. He is an adjunct faculty member at Cleveland State Community College where he developed the original surveying and GIS program. Mr. Savage has written several articles and manuscripts for various professional publications.

TAPS MEMBERSHIP APPLICATION

Please type or print in ink.

Name (Mr./Ms./Mrs.) _____

Home Address _____

City _____ State _____ Zip _____

Phone (_____) _____ Date of Birth _____

Spouse _____

Association mail will be sent to: Business Residence

EMPLOYER

Employer's Name _____

Address _____

City _____ State _____ Zip _____

Job Title _____

Phone (_____) _____ Fax (_____) _____

E-mail _____

EDUCATION

High School _____

Tech School/University _____

Degree _____

REGISTRATION

RLS LSIT Year registered _____ State _____ License # _____

County in which you reside _____

DUES SCHEDULE

I have previously held membership in TAPS.

Previous Member Reinstatement Fee \$25 *(add to member dues below)* Affiliate Member \$160

Member \$175 Retired Member \$85

Junior Member \$120 Student Member \$25

Associate Member \$120 Sustaining Member \$280

Amount Enclosed \$ _____

PRACTICE DIVISION(S)

Check which category best reflects your area of practice.

Construction Education Private Practice Government Industry Other _____

REFERENCES

Name _____ Phone _____ E-Mail _____

Name _____ Phone _____ E-Mail _____

PAYMENT

Check Enclosed Visa Mastercard

Please bill me

Annually Semi-Annually Quarterly

Credit Card# _____ Exp. Date _____

Signature _____

SPOUSE AGENDA

Registration Fee/Membership - \$25

Includes Ladies Auxiliary meeting and brunch. Dues can be paid at the meeting or mailed with spouse's TAPS registration.
To purchase tickets for breakfast, lunch or the March Madness PAC Fundraiser, please see Registration Form.

THURSDAY, MARCH 15

7:00-9:00 am Set-Up Ladies Auxiliary Silent Auction
8:00-9:00 am Registration Open

Salon 5
Conference Foyer

FRIDAY, MARCH 16

8:00-9:00 am Registration Open
5:00 pm Ladies Auxiliary Silent Auction Ends

Conference Foyer
Salon 5

SATURDAY, MARCH 17

7:00-8:00 am Registration Open
10:00 am - 12:00 pm Ladies Auxiliary Meeting and Brunch

Conference Foyer
Hospitality Suite

Notes: (1) The hotel provides a shuttle to destinations within 5 miles of the hotel (the mall, downtown Franklin). Call for pickup. (2) If you want to purchase tickets to have breakfast, lunch, afternoon exhibit gathering with your husband/significant other, tickets will have to be purchased when their registration form is sent to Lori at the TAPS office. (3) For shopping, you may want to meet in the lobby around 10:00 a.m. and share a ride, or hop on the shuttle with other ladies in the auxiliary.

IN TOWN EVENT INFORMATION

Friday/Saturday

Grand Ole Opry • 615-871-OPRY

General Jackson Dinner Cruise • 615-871-6100

MARCH MADNESS PAC FUNDRAISER

FRIDAY, MARCH 16 • 7:00 P.M.

Sports/Casino theme – \$20 cover

Includes your food, beverage and big screen TV. You will be able to buy into game boards, Texas Hold'em No Limit Poker Tournament, and much more.

Make checks payable to the LS PAC. The LS PAC cannot accept checks from corporations!

_____ @ \$20 = \$_____ Total Enclosed

Mail to TAPS office.

Names of Attendees: _____

STUDENT REGISTRATION

Registration required. No charge for seminars. Meal tickets must be purchased. College or university name required.

EXHIBIT INFORMATION

Registration required. **Viewing of Exhibits Only** (no meals/no seminars): No charge.

Thursday 8:00-9:00 am; 12:40-1:30 pm; 3:10-7:00 pm

Friday 7:00-9:00 am

LODGING is the responsibility of the attendee. The Marriott has blocked a group of rooms at a special rate of \$109 S/D. **Make reservations now.** Cut-off date is 2/21/07. 615-261-6100. Please help TAPS keep room rates down by staying at the Marriott Hotel.

Thanks to **Mario Forte**, Vice President and Conference Chairman.

REGISTRATION & PURCHASE FORM

TAPS 39th Annual Conference & Technology Exhibition

Name _____ License No. _____

Company _____

Address _____

City _____ State _____ Zip _____

Phone _____ Fax _____

E-Mail _____

Early Deadline Date 2/23/07 – Check Days Attending

Special 3-Day Package* (16 PDH)

Includes seminars, viewing of exhibits, breaks, Fri/Sat breakfast, Thurs/Fri lunch, **Thurs/Fri receptions

	<u>Early</u>	<u>Desk</u>	
<u>Member</u>	\$295	\$320	\$ _____
<u>Non-Member</u>	\$470	\$495	\$ _____

Thursday Only* (5 PDH)

Includes seminars, break, viewing of exhibits, Thursday lunch, and **reception

<u>Member</u>	\$135	\$160	\$ _____
<u>Non-Member</u>	\$310	\$335	\$ _____

Friday Only* (7 PDH)

Includes seminars, breaks, viewing of exhibits, Friday breakfast & lunch, and **reception

<u>Member</u>	\$150	\$175	\$ _____
<u>Non-Member</u>	\$325	\$350	\$ _____

Saturday Only* (4 PDH)

Includes seminars, break, Saturday breakfast.

<u>Member</u>	\$75	\$100	\$ _____
<u>Non-Member</u>	\$250	\$275	\$ _____

*Does not include spouse program

**Thurs afternoon reception (2 drink tickets, heavy & light hors d'oeuvres); Fri afternoon reception (2 drink tickets)

THURSDAY, MARCH 15

Please check the seminar you plan to attend:

- Seminar 1: "Insurance"
- Seminar 2: "Storm Drainage"
- Seminar 3: "Flood LOMC" and "T-DEC"
- Seminar 4: "High Definition Surveying"

FRIDAY, MARCH 16

SESSION 1

Please check the seminar you plan to attend:

- Seminar 1: "Insurance"
- Seminar 2: "Storm Drainage"
- Seminar 3: "Flood LOMC" and "T-DEC"
- Seminar 4: "High Definition Surveying"

SESSION 2

Please check the seminar you plan to attend:

- Seminar 1: "ALTA (2005) Standards"
- Seminar 2: "Evidence & Procedures"

Certified Survey Technician

Deadline for application and fees must be received in the NSPS office by 2/23/07. All information, fees and applications can be obtained at www.nspsmo.org.

Spouse Program

Ladies Auxiliary Dues/Registration \$25 \$ _____
Name _____

Meal Tickets

Breakfast: Fri Sat \$15/ea. day \$ _____
Lunch: Th Fri \$20/ea. day \$ _____
Thursday Reception _____ @ \$20 \$ _____
Friday Reception _____ @ \$10 \$ _____

Total Purchases

\$ _____

METHOD OF PAYMENT

Check enclosed (payable to TAPS) Charge my: Visa MC
Card # _____ Exp. Date _____
Signature _____

CONFERENCE CANCELLATION POLICY

100% Refund 20 days prior to date of event
50% Refund 15 days prior to date of event
No Refund 10 days prior to date of event

NOTICE MUST BE WRITTEN

RETURN TO:

TAPS • 607 W. Due West Avenue, Suite 96 • Madison, TN 37115
Phone 615-860-9311 • Fax 615-860-7177
Registration and TAPS membership application can be downloaded at www.taps-inc.com.

MARCH Madness PAC FUNDRAISER

Can a fifth seed win an NCAA Basketball Championship ?
Do beads of sweat traverse a surveyor's brow when he/she says "I'm All In"?
Do surveyors like to lounge around in front of a Big Screen TV ?
Do surveyors like to tell war stories ?
Do surveyors like good fellowship, delicious food, and fun?

If you are interested to know the answers to any of these questions, then do we have a party for you.

The Land Surveyors Political Action Committee (LS PAC) of TAPS would like to invite you to an informal evening of Poker, Entertainment, Food and Fun to share with your fellow surveyors, spouses and guests. The PAC Committee consist of TAPS members acting as watchdogs for our profession with regard to legislative issues that directly involve the business of land surveying. This party is a fundraiser for our organization.

The party will be held in one of the Salons of the Conference Center, commencing at 7pm on Friday, March 16th.

The Theme of the party is a Sports/Casino night, with Game Boards for the "March Madness" NCAA Basketball tournaments, along with a

Texas Hold'em No Limit Poker Tournament. There will be a Big Screen projection of a Live Basketball game, along with food, drinks, fellowship and fun!

A \$20 Door Cover per person (Cash or Personal Checks made payable to LS PAC), gets you in where you can then buy into the Texas Hold'em Poker Game and/or NCAA Game Boards, all proceeds of which will go to the LS PAC fund. There will be GREAT cash prizes awarded to the winners of the games.

I hope you will plan to attend this fun packed evening. Bring your spouse and friends. Meet and make new friends and have a great time while raising funds for the watchdogs of the Land Surveying Profession.

Mario G. Forte, RLS
Vice President &
Conference Chairman.

*March Madness PAC Fundraiser
registration form enclosed.*



Tennessee Association of Professional Surveyors

607 W. Due West Avenue, Suite 96
Madison, TN 37115-4420

615-860-9311

Fax: 615-860-7177

E-mail: tapsinc_@bellsouth.net

www.taps-inc.com

**Are you planning to move?
Let us know your new address.**

PRSR STD
U. S. Postage
PAID
Nashville, TN
Permit No. 3149

AFFILIATE - NATIONAL SOCIETY OF PROFESSIONAL SURVEYORS
AFFILIATE - AMERICAN CONGRESS ON SURVEYING AND MAPPING